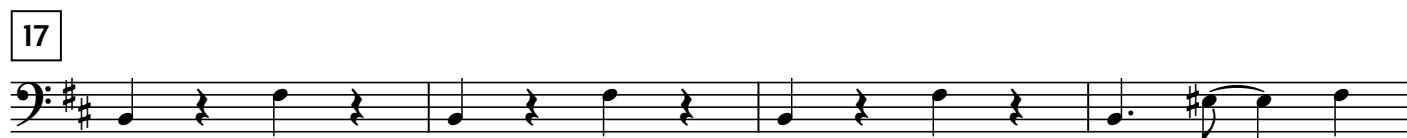


## Cantina Band

Driving "jazz"  $\text{♩} = \text{ca. } 128-132$ 

41

45 

49

*mp*

53

Musical notation for measure 53, bass clef, key of D major. The measure contains a sequence of notes: D2 (half note), D3 (quarter note), E3 (quarter note), F#3 (quarter note), G3 (quarter note), A3 (quarter note), B3 (quarter note), C#4 (quarter note), D4 (quarter note), E4 (quarter note), F#4 (quarter note), G4 (quarter note), A4 (quarter note), B4 (quarter note), C#5 (quarter note), D5 (quarter note).

57

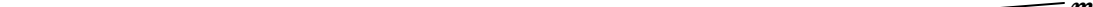


Musical notation for measure 57, bass clef, key of D major. The measure contains four eighth notes: D2, A1, D2, and A1.

[illegible]

65

Exercise 65 is a short piece in the bass clef, key of D major (two sharps). It consists of a single line of music with a key signature of two sharps (F# and C#). The melody is composed of eighth notes: D2, E2, F#2, G2, A2, B2, C#3, and D3. The final note D3 is tied to the next measure.

69 

73

[illegible]

81



85



89



93



97



101



105



109



113



117



121



125



129



133



137



143



145



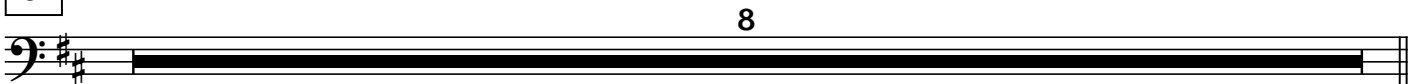
149



153



157



157-164

165



169



173



177

