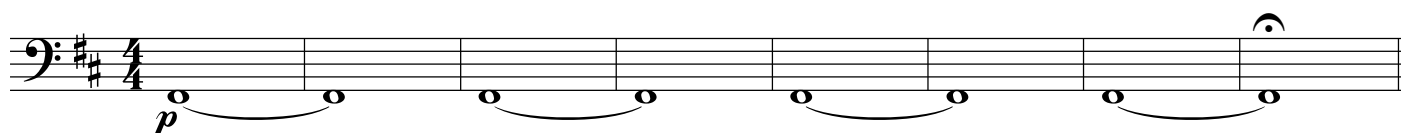
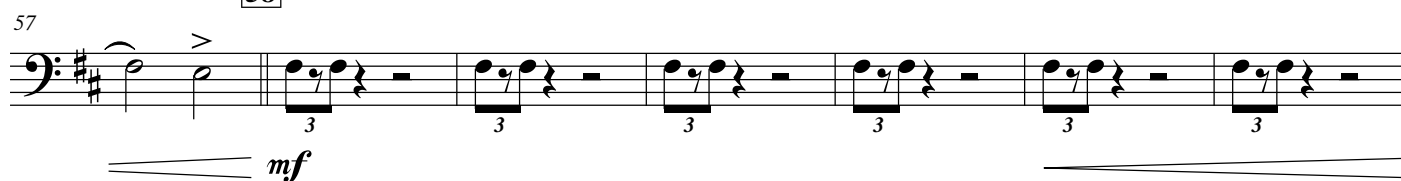
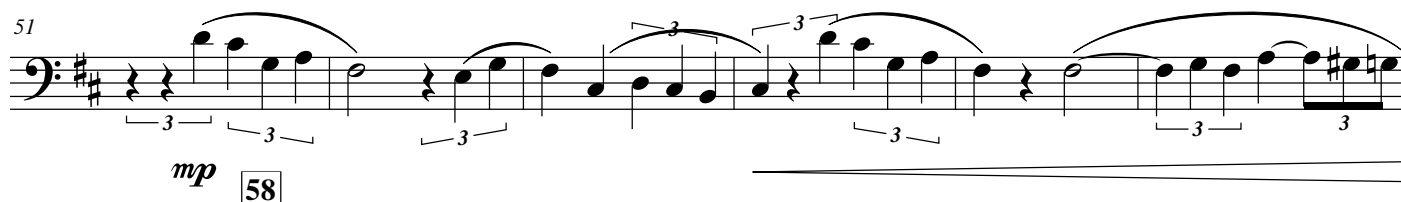
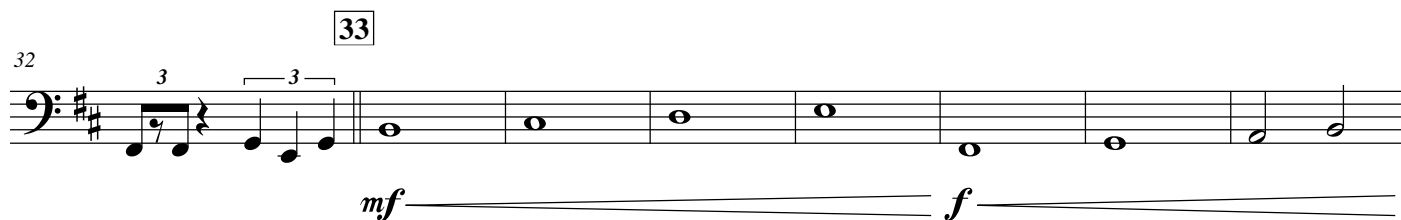
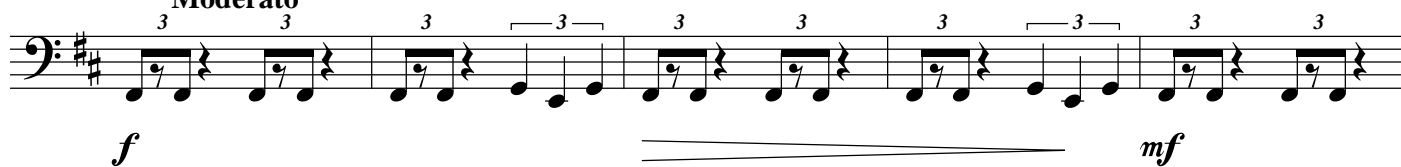


Adagio Misterioso e Espressivo



9

Moderato



64 66

64 65 66 67 68 69 70

*f*

Detailed description: Musical staff 64-66. Key signature: two sharps (F# and C#). The staff contains measures 64, 65, and 66. Measure 64 has a whole rest. Measure 65 has a quarter note G4, a quarter note A4, and a half note B4 with an accent (>). Measure 66 has a quarter note G4, a quarter note F#4, a quarter note E4, a quarter note D4, a quarter note C#4, a quarter note B3, a quarter note A3, and a quarter note G3. There are triplets over measures 64-65 and 65-66. A double bar line is at the end of measure 66. A dynamic marking *f* is below the staff.

70 74

70 71 72 73 74 75 76 77 78 79

*ff*

Detailed description: Musical staff 70-74. Key signature: two sharps. The staff contains measures 70 through 79. Measures 70-73 have quarter notes G4, A4, B4, and C5, each with a triplet. Measures 74-79 have quarter notes G4, A4, B4, and C5, each with a triplet. A double bar line is at the end of measure 74. A dynamic marking *ff* is below the staff.

75

75 76 77 78 79 80 81

Detailed description: Musical staff 75-81. Key signature: two sharps. The staff contains measures 75 through 81. Measures 75-81 have quarter notes G4, A4, B4, and C5, each with a triplet. A double bar line is at the end of measure 81.

80 82

80 81 82 83 84 85

*fff*

Detailed description: Musical staff 80-85. Key signature: two sharps. The staff contains measures 80 through 85. Measures 80-85 have quarter notes G4, A4, B4, and C5, each with a triplet. A double bar line is at the end of measure 82. A dynamic marking *fff* is below the staff.

85

85 86 87 88 89 90

*p*

Detailed description: Musical staff 85-90. Key signature: two sharps. The staff contains measures 85 through 90. Measures 85-90 have quarter notes G4, A4, B4, and C5, each with a triplet. A double bar line is at the end of measure 90. A dynamic marking *p* is below the staff.

90

90 91 92 93 94 95

*mf*

Detailed description: Musical staff 90-95. Key signature: two sharps. The staff contains measures 90 through 95. Measures 90-95 have quarter notes G4, A4, B4, and C5, each with a triplet. A double bar line is at the end of measure 95. A dynamic marking *mf* is below the staff.

95 98

95 96 97 98

*mf*

Detailed description: Musical staff 95-98. Key signature: two sharps. The staff contains measures 95 through 98. Measures 95-98 have quarter notes G4, A4, B4, and C5, each with a triplet. A double bar line is at the end of measure 98. A dynamic marking *mf* is below the staff.

102 107

102 103 104 105 106 107

*f* *ff* *f*

Detailed description: Musical staff 102-107. Key signature: two sharps. The staff contains measures 102 through 107. Measures 102-104 have quarter notes G4, A4, B4, and C5, each with a triplet. Measures 105-107 have quarter notes G4, A4, B4, and C5, each with a triplet. A double bar line is at the end of measure 107. Dynamic markings *f*, *ff*, and *f* are below the staff.

109

109 110 111 112 113 114

Detailed description: Musical staff 109-114. Key signature: two sharps. The staff contains measures 109 through 114. Measures 109-114 have quarter notes G4, A4, B4, and C5, each with a triplet. A double bar line is at the end of measure 114.

115 Adagio Misterioso e Espressivo

114

114 115

*p*

Detailed description: Musical staff 114-115. Key signature: two sharps. The staff contains measures 114 and 115. Measure 114 has a quarter note G4, a quarter note A4, and a half note B4, each with a triplet. Measure 115 has a whole note G4. A double bar line is at the end of measure 115. A dynamic marking *p* is below the staff.