

Horn in Eb 2

Commissioned by the Norwegian Band Federation for the 2013  
European Brass Band Championships, Oslo, Norway

# Myth Forest

-Hestefallstjønn-

*a tone poem for Concert Band*

Stig Nordhagen

2012rev.2020/CB version 2021

*Sunburst*  
♩=52

2 muted 5 ppp ppp ppp

14

2 3 open p mp

25 1

p mp p mf

30 **Hold back Tempo**

ff fff

36 2 (♩=52) *Bugs and Birds*

3 5 3 f f

-Myth Forest-  
*Hestefallstjónn*  
Horn in Eb 2

2

47   
*p* *cresc. poco a poco*

50 

53 

56   
Sub ♩=78 *accel. agitato*

59   
*f cresc.*

62   
♩=138

65   
*fff*

72   
4

77   
5

82   
5

-Myth Forest-  
*Hestefallstjonn*

Horn in Eb 2

3

87

90 2+3 2+3

95 2+3 6 3

102 2+3 8 7 2 ff ff

116 2 sfz sfz mp

123 8 2

128 2

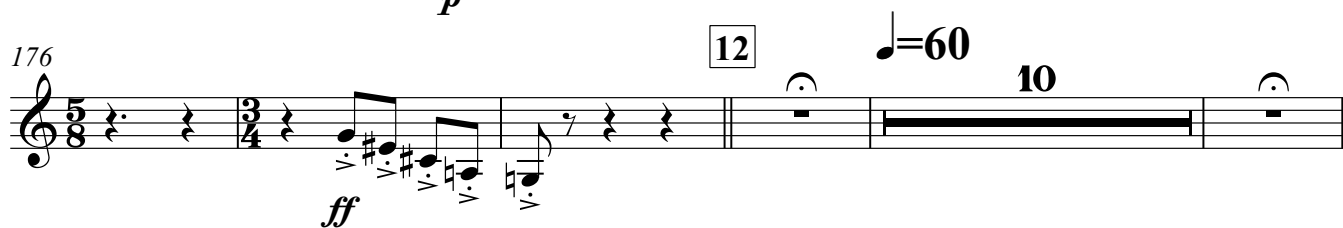
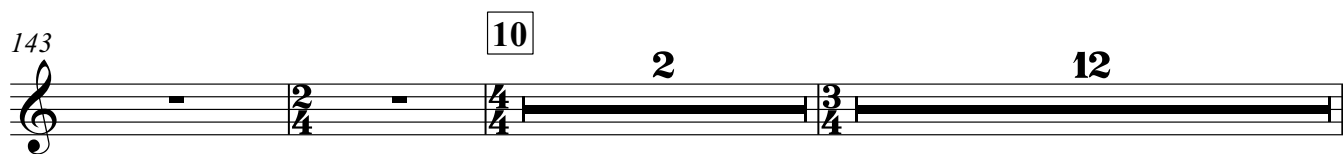
132 2

136 9

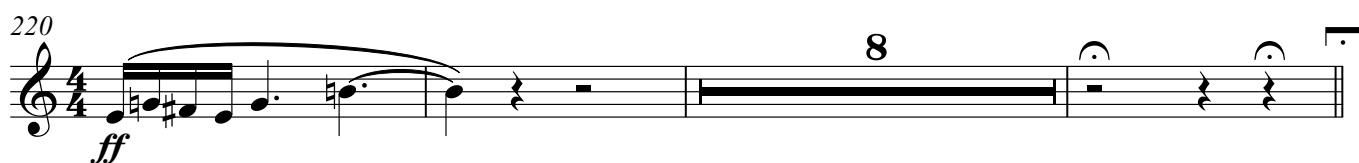
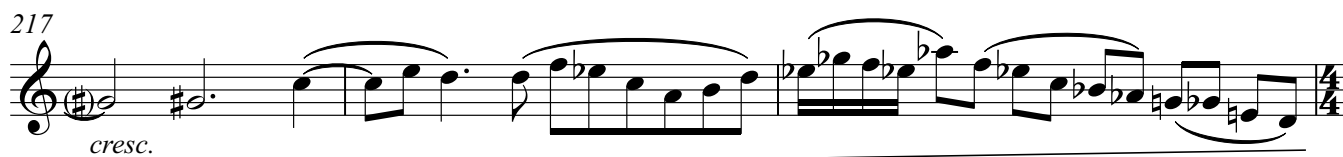
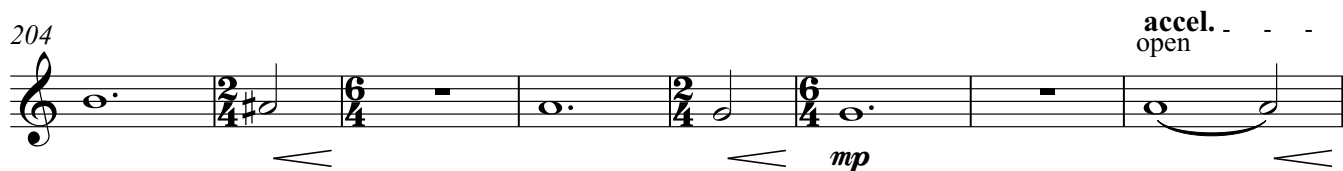
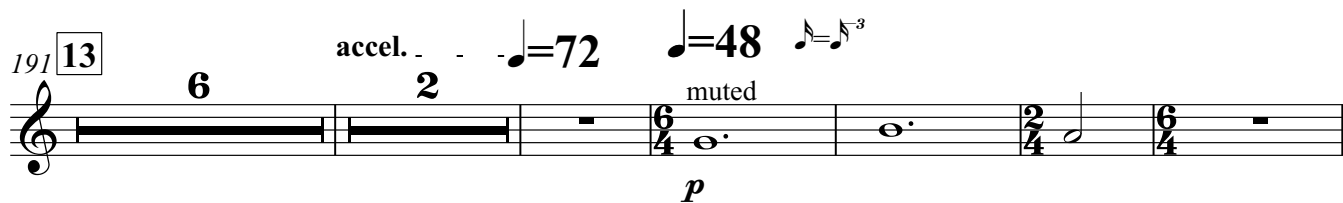
139

141 f mp f

-Myth Forest-  
*Hestefallstjónn*  
 Horn in Eb 2



*Water lilies*

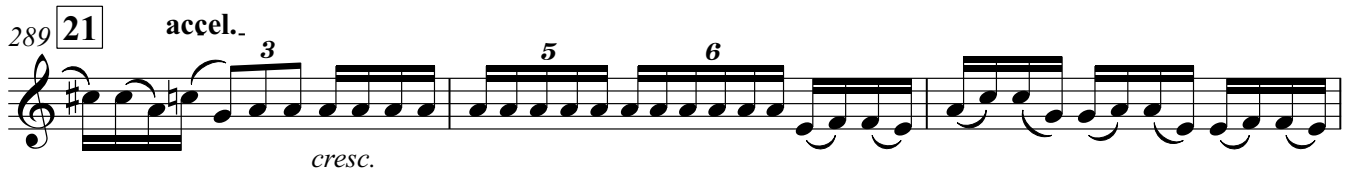


## Horn in Eb 2

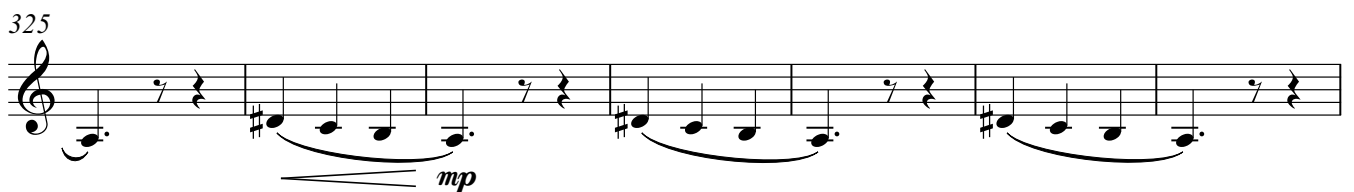
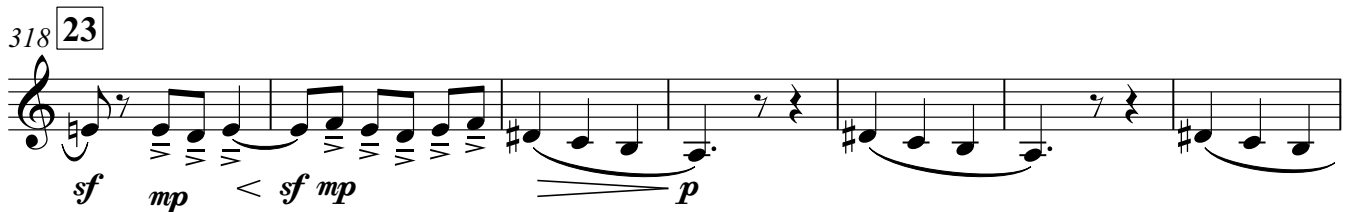
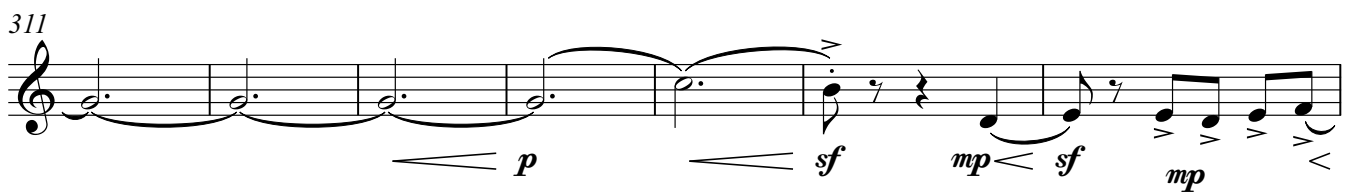
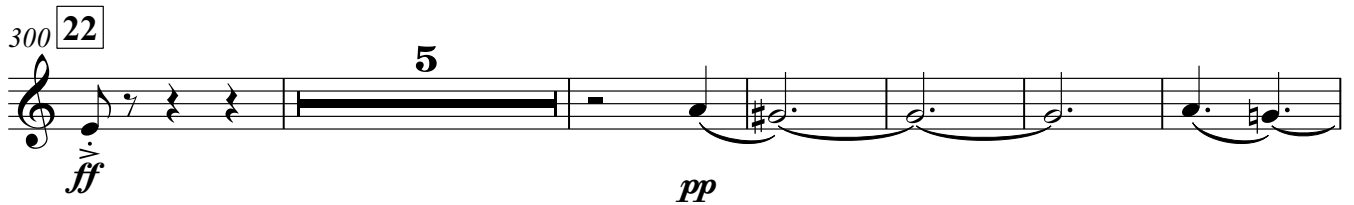
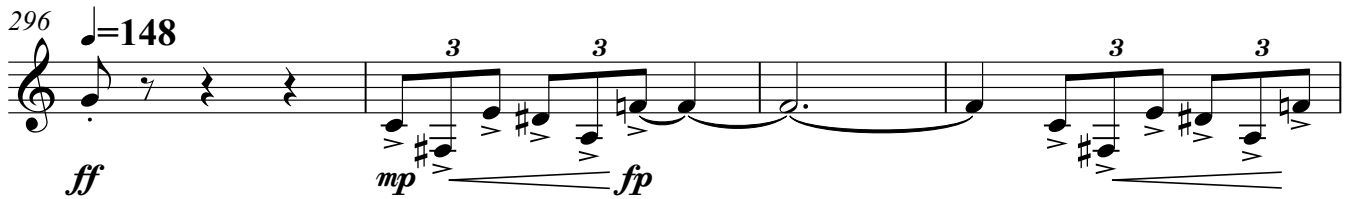
-Myth Forest-  
*Hestefallstjónn*

Horn in Eb 2

6



*The creatures of the forest  
are dancing into the night*

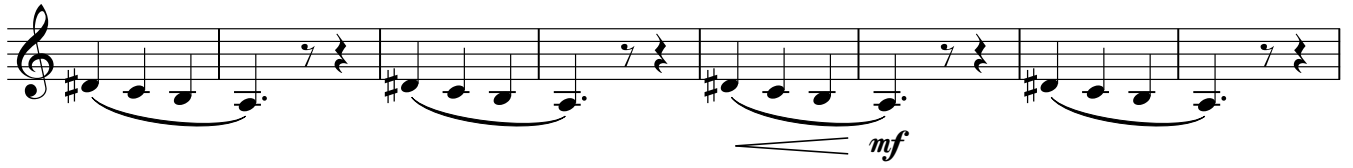


-Myth Forest-  
*Hestefallstjónn*

Horn in Eb 2

7

332



340

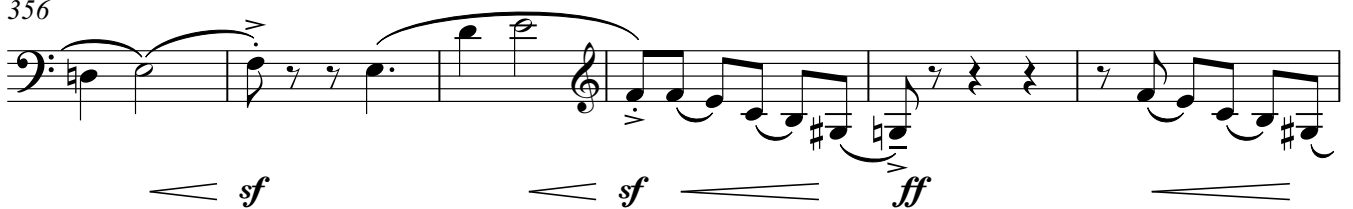
24



348

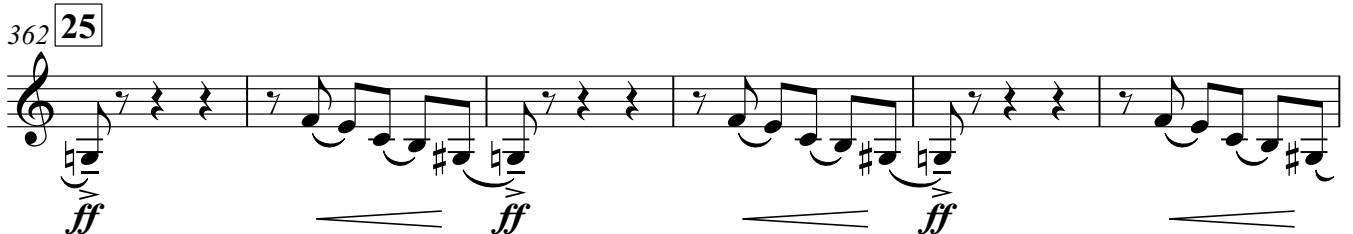


356

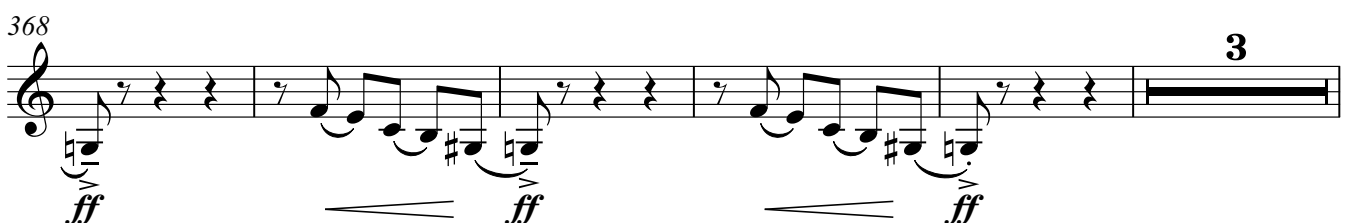


362

25



368



-Myth Forest-  
*Hestefallstjónn*  
Horn in Eb 2

8

376 *sf* *gliss.* **26** *ff* *sf*

379 *ff* *sf* *gliss.* *ff*

382 *sf* *gliss.* *ff* *sf* *gliss.*

385 *ff* *sf* *gliss.* *ff* *sf* *gliss.* *ff* *sf* *accel.*

389 *gliss.* **27** ♩ = 152 *gliss.*

392 *gliss.* *gliss.*

396

401 **28** *fff* *fff<sup>p</sup>* *ffsf*

Detailed description: This musical score is for the Horn in Eb 2 part of a piece titled '-Myth Forest- Hestefallstjónn'. It spans measures 376 to 401. The notation is in treble clef with a key signature of one flat (Bb). The score includes various dynamic markings: *sf* (sforzando), *ff* (fortissimo), *fff* (fortississimo), and *fff<sup>p</sup>* (fortississimo piano). It also features glissando markings (*gliss.*) and an acceleration marking (*accel.*). Measure numbers 26, 27, and 28 are indicated in boxes. A tempo marking of ♩ = 152 is present at measure 389. The score includes slurs, accents, and breath marks. The time signature changes from 4/4 to 3/4 at measure 396 and back to 4/4 at measure 401.