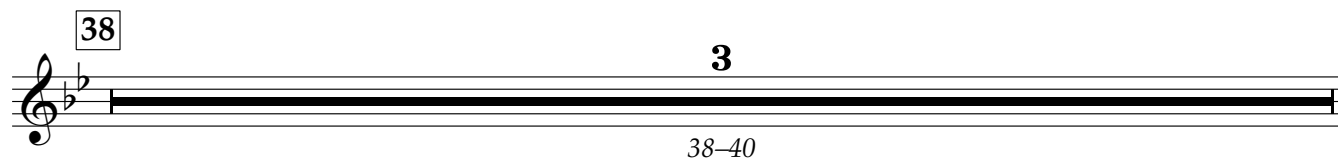
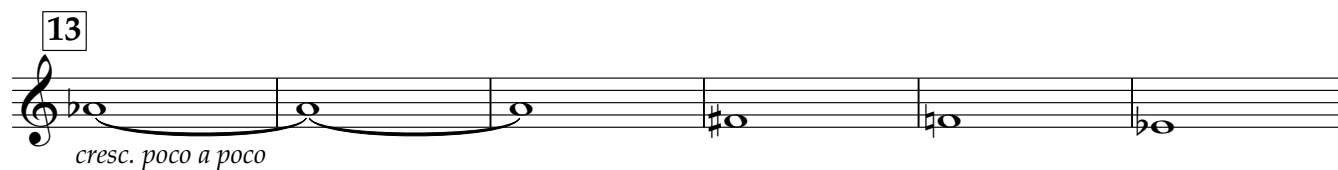
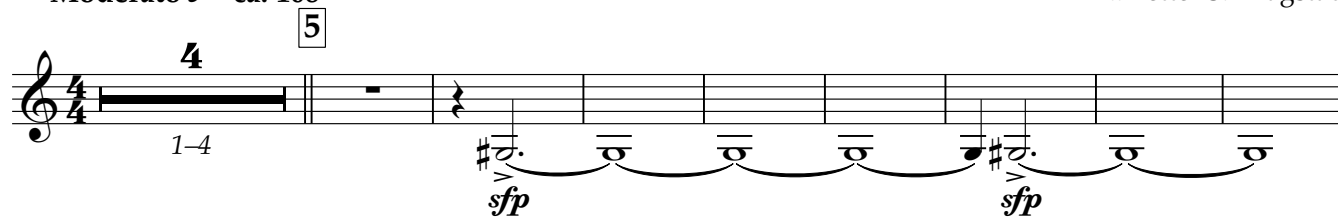


Tuba in B \flat (TC)

Norge i rødt, hvitt og blått

Lars-Erik Larsson
Arr.: Petter S. Kragstad

Moderato ♩ = ca. 108



41 42

46

50

54

57

62

66

70

75

79

83

83-86

Detailed description: This page contains musical notation for a Tuba in B \flat part. It consists of ten staves of music. The notation includes various note values (quarter, eighth, sixteenth notes), rests, and dynamic markings such as *mf*, *f*, *fp*, and *fz*. There are also articulation marks like accents and slurs. Measure numbers are provided at the start of each staff, with some measures grouped together (e.g., 70-72, 83-86). The key signature is B \flat major (two flats).

90

fp

95

2

95-96

mf

fp

♩ = ♩ (shuffle 8's) ♩ = ♩ (straight 8's)

4

99-102

mf

fp

105

f

p

f

110

mf

114

fp

118

4

118-121

f

fp

126

f

rit.

130 Molto pesante (Firebird)

sff

pp sub.

sff

Detailed description of the musical score: The score is written for Tuba in B♭ (TC). It consists of nine staves of music. The first staff (measures 90-94) is in 4/4 time, featuring eighth notes and quarter notes with accents and dynamic markings of *fp*. The second staff (measures 95-98) is in 2/4 time, starting with a whole note rest for measures 95-96, followed by eighth notes and quarter notes, with dynamic markings of *mf* and *fp*. The third staff (measures 99-104) is in 4/4 time, starting with a whole note rest for measures 99-102, followed by eighth notes and quarter notes, with dynamic markings of *mf* and *fp*. The fourth staff (measures 105-109) is in 4/4 time, featuring eighth notes and quarter notes with accents and dynamic markings of *f*, *p*, and *f*. The fifth staff (measures 110-113) is in 4/4 time, featuring eighth notes and quarter notes with accents and dynamic markings of *mf*. The sixth staff (measures 114-117) is in 4/4 time, featuring eighth notes and quarter notes with accents and dynamic markings of *fp*. The seventh staff (measures 118-125) is in 4/4 time, starting with a whole note rest for measures 118-121, followed by eighth notes and quarter notes, with dynamic markings of *f* and *fp*. The eighth staff (measures 126-129) is in 4/4 time, featuring eighth notes and quarter notes with accents and dynamic markings of *f*, with a *rit.* marking. The ninth staff (measures 130-133) is in 3/4 time, featuring half notes and quarter notes with accents and dynamic markings of *sff*, *pp* sub., and *sff*.