

B♭-Bass(f-clef)

Mjelle

Tekst og Musikk: Terje Nilsen
Arrangement: Lars Erik Gudim

$\text{♩} = 92$

p

[illegible]

p

19 C



28 **D**

Measure 28: A half note D (labeled 'D' in a box) and a half note G. A slur is placed over the G, and a fermata is placed over the D.

mp

34

Exercise 34 consists of three measures. The first measure contains a bass clef, a key signature of one sharp (F#), and two quarter notes: F#2 and G#2. The second measure contains two quarter notes: A2 and B2. The third measure contains two quarter notes: C3 and D3. A box labeled 'E' is positioned above the staff between measures 2 and 3.

39

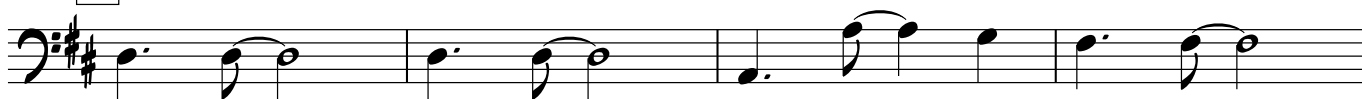
45 **F**

The musical notation for measure 45 begins with a boxed 'F' indicating a key signature change to one flat (B-flat major or F major). The notation is in bass clef with a key signature of one flat. The measure contains four groups of notes: 1) a dotted quarter note F2 and an eighth note G2 beamed together; 2) a dotted quarter note A2 and an eighth note B2 beamed together; 3) a dotted quarter note C3 and an eighth note D3 beamed together; 4) a dotted quarter note E3 and an eighth note F3 beamed together. The notes are written on a five-line staff.

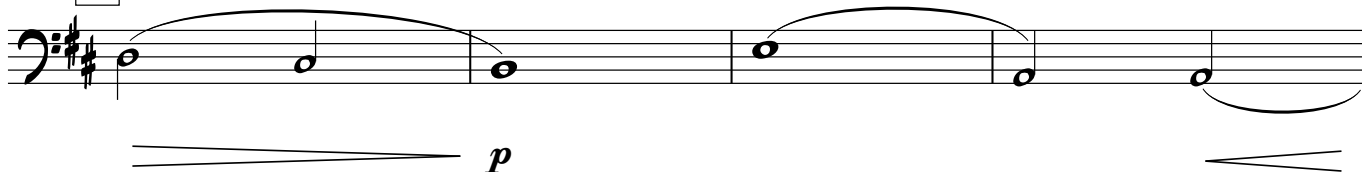
mf

49

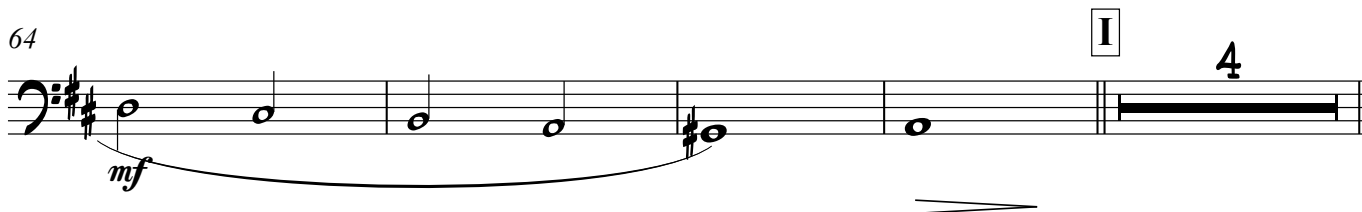
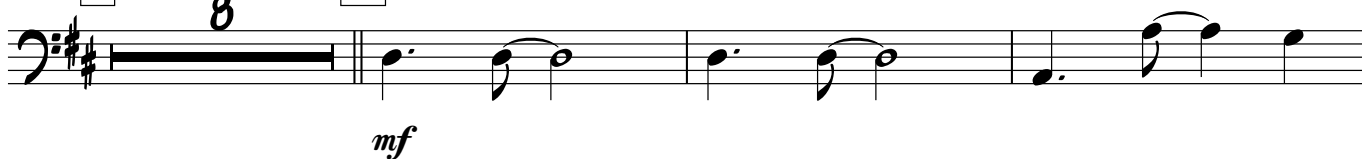
49

53 **G**

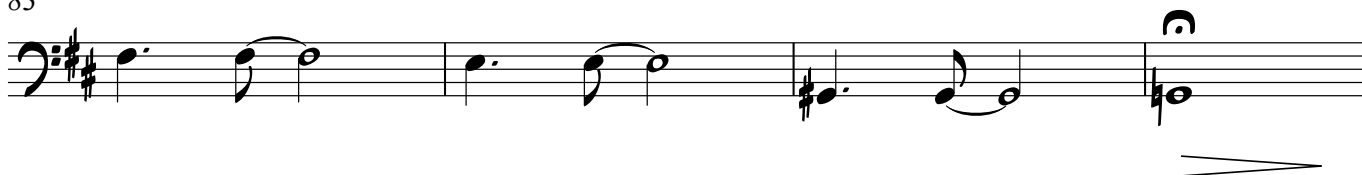
57

60 **H**

64

72 **J**

83

87 **L**

rep.ad.lib.

