

Konsertouverture

Concert Overture

Viktor Widqvist

arr: Niclas Blixt

Larghetto (♩ = 62) **12** **1** **rit.** **1** **a tempo** **12**

29 **Poco più mosso** **A** **6** **mf** **p**

41 **1** **p**

47 **B** **5** **mf** **p**

56 **1** **3** **p** **mf**

65 **C** **Tempo I** **3** **5** **mf**

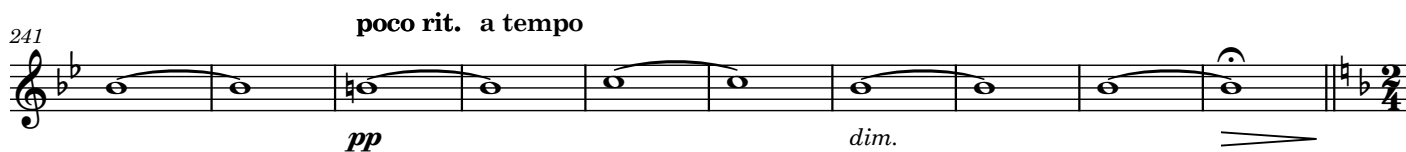
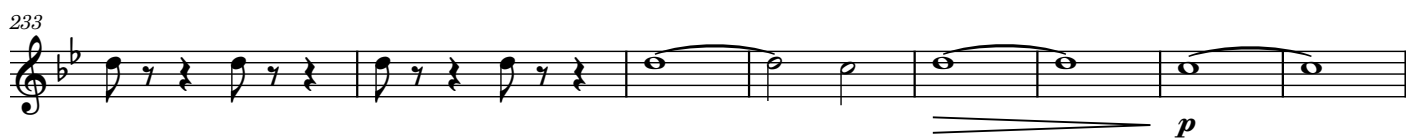
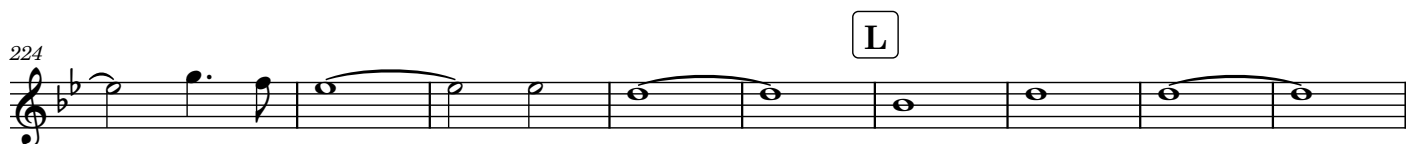
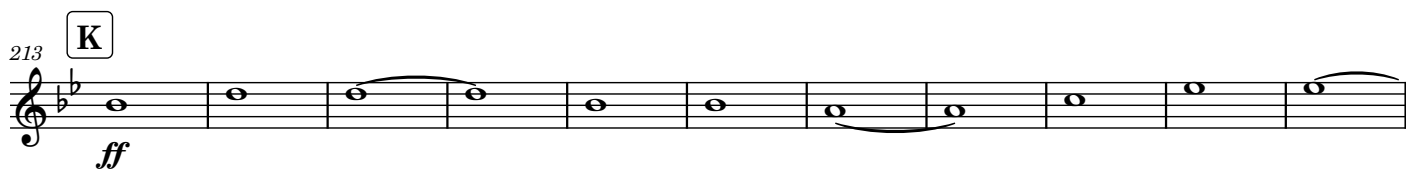
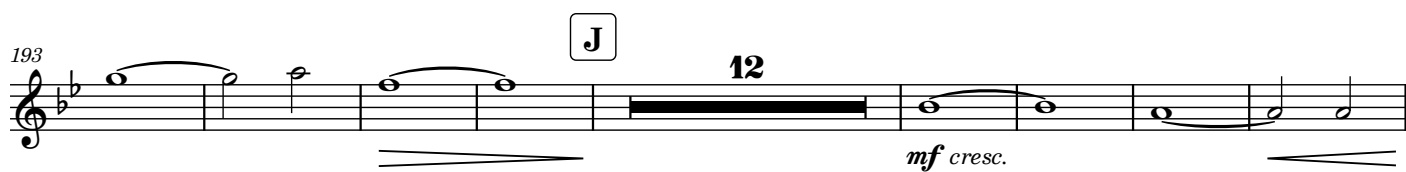
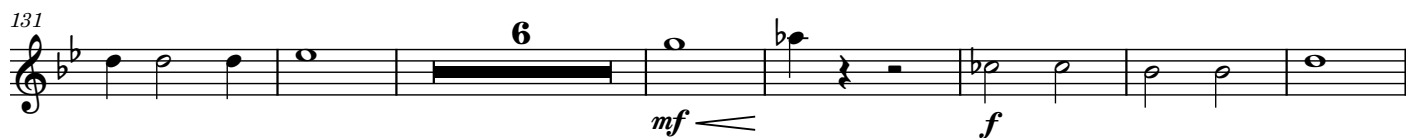
78 **D** **Allegro** (♩ = 126) **20** **E** **pp**

103

109

115 **F** **f**

123



251 **M** Moderato (♩ = 86) **N**

262 **O**

270 **P** **Q**

279 **R**

299 **S** Allegro (♩ = 126) **T**

310 **U** Poco meno ♩ = 112

342 **V** Allegro (♩ = 126)

371 **W**

386

392 **3** rit. **X** Presto (♩ = 140)

402

409

419

The musical score for B♭ Trombone 1 consists of four staves. The first staff (measures 392-401) begins with a triplet of eighth notes, followed by a half note, and then a series of eighth and quarter notes. Dynamics include *f* and *ff*. A rehearsal mark 'X' is placed above measure 395. The second staff (measures 402-408) continues with eighth and quarter notes. The third staff (measures 409-418) features half notes and quarter notes. The fourth staff (measures 419-420) ends with a double bar line. The key signature has one flat (B♭), and the tempo is marked 'Presto' with a quarter note equal to 140 beats per minute.