

The Junction Point

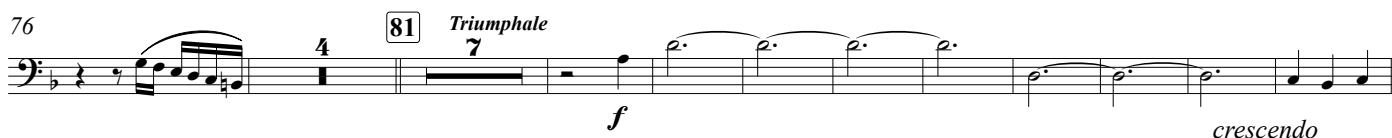
Railway Builders

Bb Tuba (BC)

John Brakstad

Moderato e deciso $\text{♩} = 82$

23 **Energico** $\text{♩} = 108$



Andante espressivo (♩ = 82)

167 8 175 8 183 8 191 4 Bassclar *poco rit.*
mp

199 *a tempo*
mf *poco f* *dim. poco a poco* *mp* *rit.*

211 *a tempo* 4 216 Ritmico ♩ = 92+/-
fp *fp* *mf*

224 *one* *tutti* *one* *tutti*
mp *mf* *mp* *mf*

231 234
fp *fp* *f*

239 248
f

249
mp

257
crescendo *f* *crescendo* *ffp*

265 267 5
f *mf* *mf*

277 Div. 285 293
f *mf*

295 1 1 3
f

305 307 315 8
mf

323 *f* *mf* 333

335 *f* *mf* 340

341 *f* *mp* 346 *leggiere* *onc*

348 *crescendo* *mf*

354 *mp*

360 *crescendo* *mf* *f* 364 *tutti*

367

374

380 *mf* *f* *mf* *f* *mf*

386 *mp* *mf* *mp* 392

394 *crescendo* *mf*

403 *mf* *Div.* 408

412 *f* *f* 420

422 *ff* *f* *ff* 2

430 *mf* *crescendo* *f* *crescendo* 2

437 *ff* *mf* *f* 443

447 *crescendo* *ff* 451

455 *f* *mf* 459

462 *f* *mf*

468 *crescendo* *ff* 471

475 *con forza* *f*

481 *rit. poco a poco* *crescendo* 1

488 *ff* *molto rit.* *Andante* ♩ = 72 2 *fff*