

Bb Trombone 1

Gudda

Roger Tallroth
arr. John Philip Hannevik

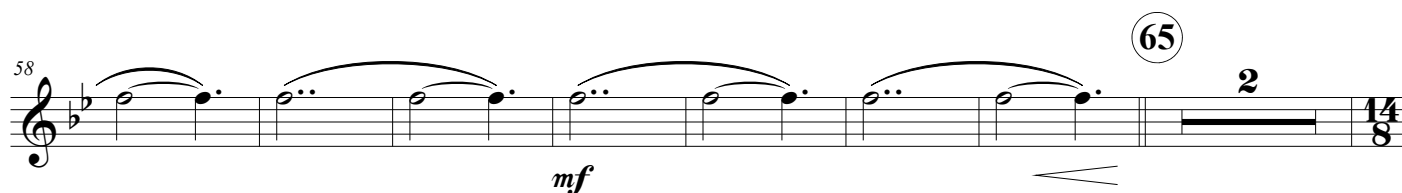
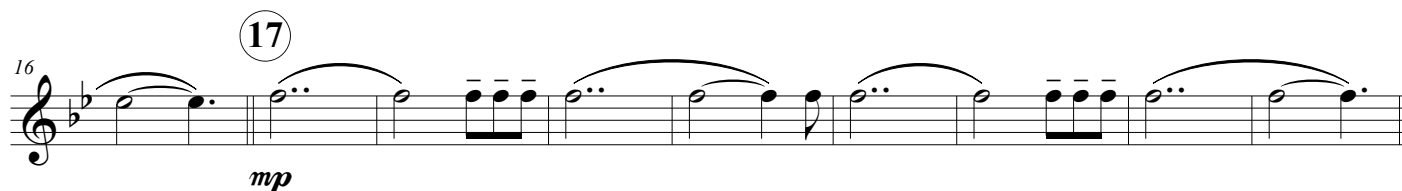
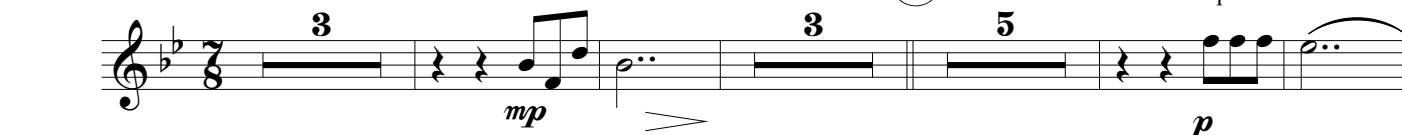
♩=172, 2+2+3,

Singing Legato

Cup mute

9

Open



77 85

8

mf

The musical score for 'The Rose Tree' is written on a single staff. It begins with a treble clef, a key signature of one flat (B-flat), and a common time signature (C). The melody starts with a quarter note G4, followed by a half note A4, and then a quarter note B-flat4. A first ending bracket labeled '8' spans the next two measures. A second ending bracket labeled '4' spans the next two measures. The melody continues with a quarter note G4, a half note A4, and a quarter note B-flat4. A third ending bracket labeled '109' spans the next two measures. The melody concludes with a quarter note G4, a half note A4, and a quarter note B-flat4. The score includes dynamic markings: *mp* (mezzo-piano) and *f* (forte). The piece ends with a double bar line and a final measure containing a quarter note G4 and a half note A4.

117 121 Harmon mute *mp*

124

129

This block shows the musical notation for measures 124 through 129. Measure 124 begins with a treble clef and a key signature of one flat (B-flat). The melody consists of quarter notes: G4, A4, B-flat4, and A4. Measures 125-128 continue the melody with various rhythmic patterns, including eighth and quarter notes. Measure 129 features a long note, likely a whole note, with a fermata, indicating a final or sustained sound.

[illegible]