

Tuba E \flat

VIKING SAGA

Composer: Ray Farr

1 *Slow* 4 5 6 7 *Slow* 8 9

pp *mf* *p* + 8ve basso

10 11 12 13 14 15

+ 8ve basso accel.

16 17 18 19 20 *fast*

mf *cresc.* *f* *f* + 8ve basso

21 22 23 24

25 26 *marcato* 27 28

29 30 31 32 *any high note* 33

ff *gliss.*

34 35 36 37

38 39 *marcato* 40 *stacc.* 41

p subito

42 43 44 45 3

cresc.

46 47 48 49

f + 8ve basso

50 51 52 53 54

cresc. *ff*

55 56 57 58 59

f

60 61 62 63 64

sostenuto

65 66 67 68 69

mf *cresc.*

70 71 72 73 74

ff *ff*

75 76 77 78 80

2

81 83 84 85 86 87

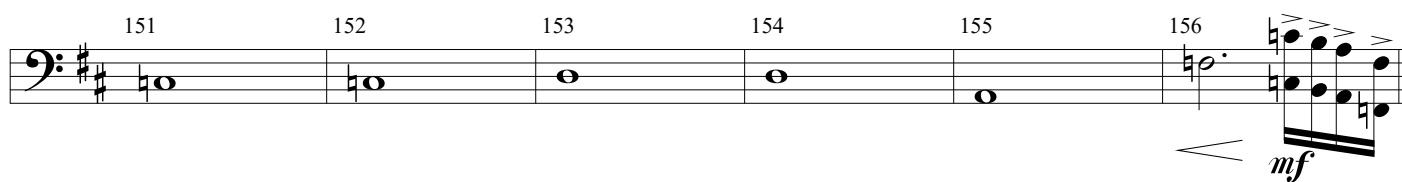
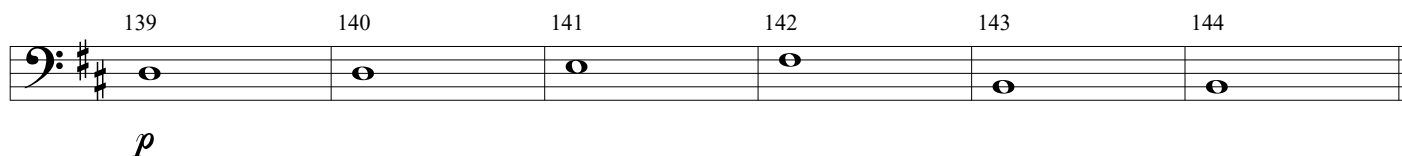
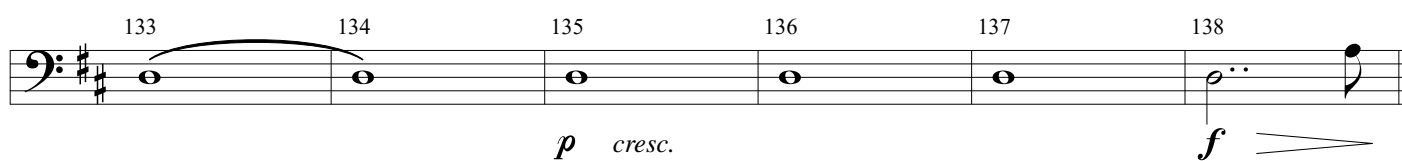
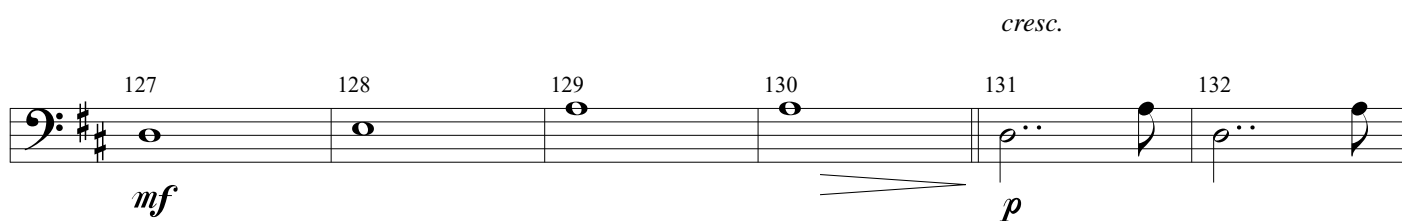
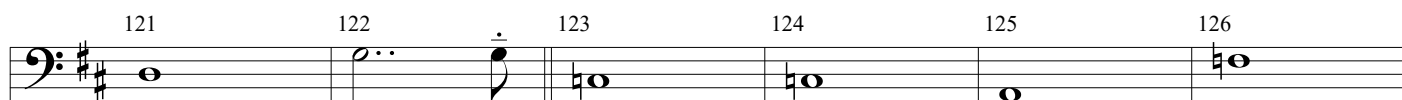
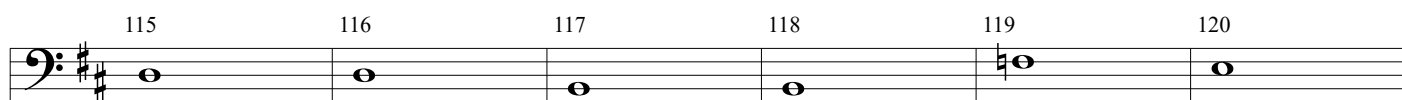
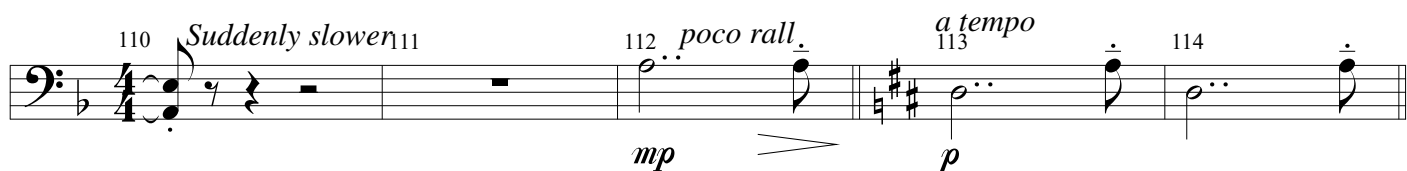
p *cresc.*

88 89 90 91 92 93

ff

94 95 96 97 98 99

2



157 158 159 160 161 162 *rall.*

cresc.

163 *a tempo* 164 165 166 167 *rall.* 1

ff *dim.* *mf* *p*

Free time 2 "MIST OF TIME" 3 "FIRE CRACKLE" 4 not together "SERIMNER" THE PIG OF VALHALLA 3 5 "HUGIN & MUNIN" THE RAVENS OF ODIN

mf *f* *continue*

6 "WATER" 174 Slow 175 176 177

stop *p*

178 179 180 3 183 184 185

pp *ff* *dim* *mp*

186 187 188 189 190 191

>

192 193 *marc.* 194 195 196

mp *p* *cresc.*

197 198 199 200 2 202

f *f*

203 4 207 208 209

f *mp* *cresc.*

210 211 212 213

f *>*

214 *f* *ff* *f*

215 216 217 2 219

220 221 222 223 3 3

224 225 226 227 2

229 230 231 232 2 234 235

f *dim* *ff* *mf*

236 237 238 239 240 241

mf

242 243 244 245 246

cresc. *f*

247 *rall.* 248 249 *Slow* 250 251 252

ff *cresc.*

253 254 3

255 256 257 258 *rall.* 259 260

sostenuto

Detailed description: This musical score is for a bass clef instrument, spanning measures 214 to 260. The key signature has two flats (B-flat and E-flat). The score includes various musical notations such as triplets, slurs, and dynamic markings. Measure 214 starts with a forte (*f*) dynamic and a triplet of eighth notes. Measure 215 features a fortissimo (*ff*) dynamic and a half note. Measure 216 has a fortissimo (*ff*) dynamic and a half note. Measure 217 is a whole rest. Measure 218 is a whole note. Measure 219 has a forte (*f*) dynamic and a triplet of eighth notes. Measure 220 has a forte (*f*) dynamic and a triplet of eighth notes. Measure 221 has a mezzo-forte (*mf*) dynamic and a half note. Measure 222 has a mezzo-forte (*mf*) dynamic and a half note. Measure 223 has a mezzo-forte (*mf*) dynamic and a half note. Measure 224 has a mezzo-forte (*mf*) dynamic and a half note. Measure 225 has a fortissimo (*ff*) dynamic and a half note. Measure 226 has a fortissimo (*ff*) dynamic and a half note. Measure 227 has a fortissimo (*ff*) dynamic and a half note. Measure 228 is a whole rest. Measure 229 has a forte (*f*) dynamic and a half note. Measure 230 has a forte (*f*) dynamic and a half note. Measure 231 has a forte (*f*) dynamic and a half note. Measure 232 has a forte (*f*) dynamic and a half note. Measure 233 is a whole rest. Measure 234 has a forte (*f*) dynamic and a half note. Measure 235 has a forte (*f*) dynamic and a half note. Measure 236 has a forte (*f*) dynamic and a half note. Measure 237 has a forte (*f*) dynamic and a half note. Measure 238 has a forte (*f*) dynamic and a half note. Measure 239 has a forte (*f*) dynamic and a half note. Measure 240 has a forte (*f*) dynamic and a half note. Measure 241 has a forte (*f*) dynamic and a half note. Measure 242 has a forte (*f*) dynamic and a half note. Measure 243 has a forte (*f*) dynamic and a half note. Measure 244 has a forte (*f*) dynamic and a half note. Measure 245 has a forte (*f*) dynamic and a half note. Measure 246 has a forte (*f*) dynamic and a half note. Measure 247 has a forte (*f*) dynamic and a half note. Measure 248 has a forte (*f*) dynamic and a half note. Measure 249 has a forte (*f*) dynamic and a half note. Measure 250 has a forte (*f*) dynamic and a half note. Measure 251 has a forte (*f*) dynamic and a half note. Measure 252 has a forte (*f*) dynamic and a half note. Measure 253 has a forte (*f*) dynamic and a half note. Measure 254 has a forte (*f*) dynamic and a half note. Measure 255 has a forte (*f*) dynamic and a half note. Measure 256 has a forte (*f*) dynamic and a half note. Measure 257 has a forte (*f*) dynamic and a half note. Measure 258 has a forte (*f*) dynamic and a half note. Measure 259 has a forte (*f*) dynamic and a half note. Measure 260 has a forte (*f*) dynamic and a half note.