

E♭ BASS (BC)

SING SANG SUNG

GORDON GOODWIN

ARR: REID GILTE

$\text{♩} = 120$
 5
 13
 23
 31
 45
 61

SING SANG SUNG - Eb BASS (8C) - 2



75



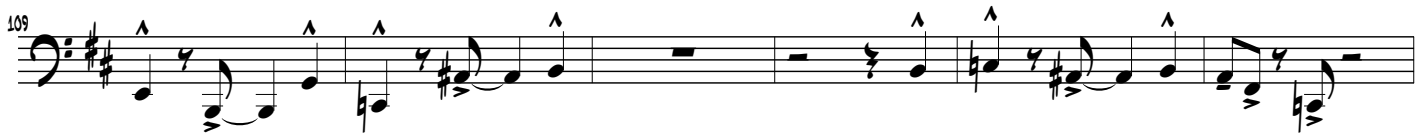
83



97



105



121



SING SANG SUNG - Eb BASS (BC) - 3



137



145



155



171

179



187

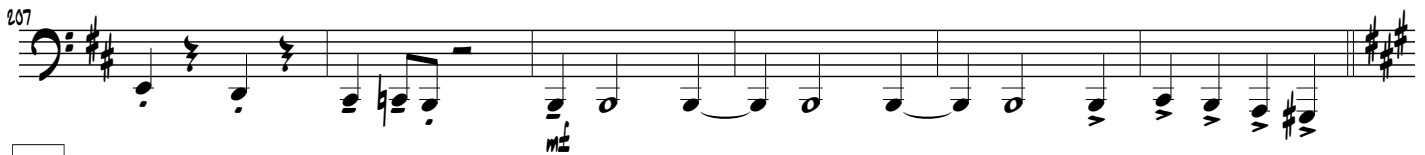


196



SING SANG SUNG - Eb BASS (8C) - 4

203



213



221



229



237



247

