

Tuba in Bb/F 2

# Gallito

*Pasodoble torero*

Santiago Lope (1871-1906)

Arranged by Espen Andersen

10 **A**

19

28 1. 2.

36 **B**

43

50 1. 2. **C**

58

66 **D**

74

82 **E**

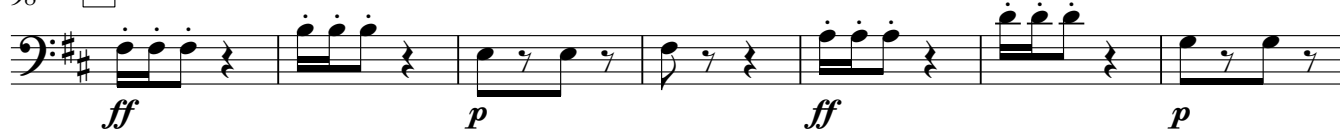
Gallito  
Tuba in Bb/F 2

90



98

**F**



105



114

**G**



122

