

Trombone 2
Bass clef in Bb

Bestilt av Opus82 med støtte fra Komponistenes vederlagsfond

Continental Divide

for wind band

Stig Nordhagen

$\text{♩} = 56$

3

p

7 **1**

mp $mf > mp$ mfp $f > mf$ *accel.*

15 p ff $mf < f$

$\text{♩} = 112$

20

27 **3** f ff mf ff mp

37 f p *rit.* p sfz

49 **5** f mf f mp

59 f mf f sf

68 **7** mp mf

80 **9** 4

-Continental Divide-

2

Trombone 2

84

mf *f* *f*

88

mf *f* *f*

92 **10**

ff

103 **11**

fp *fp* *fp* *ff*

116 $\text{♩} = 60$ Cup mute

mp *p* *p*³ *pp* *mp*

123 **12**

pp dolce

133 open **13**

p espress. *mp* *p* *mp*

139 **14** accel.

mp *mf* *f*

$\text{♩} = 82$ Press forward **14** rall.

f *ff*

151 $\text{♩} = 60$

mf *mp* *mf*

164 **15**

p *f* *ff*³

-Continental Divide-

Trombone 2

3

172 **16** **4** **3** **2** **11**

193 **5** **18** **3** *mp* *mf*

205 **19** *mp* *mp* *mf* *poco accel.*

208 **20** *ff* *3* *3* *3*

212 $\text{♩} = 69$ $\text{♩} = 138$ **21** *f* *ff* *f*

218 *gliss.* **22** *f* *ff* *ff* *3* *3* *3* *3* *3* *3*

224 *f* *ff* *f* *3* *3* *3* *3* *3* *3*

230 **23** *f* *3* *3* *3* *3* *3* *3*

235 *f molto espress. e tenuto*

243

251

258 **24** *ff*

-Continental Divide-

4 Trombone 2

268 **25** **6** **26**

ff *p* *mp*

280 **3** **27**

ff molto espress.

288 **3** **28** **6**

sfz *ff* *pp* *mf*

300 **29** **30** senza rit.

ff *p* *f* *mp* *pp*

310 $\text{♩} = 68$

mp *pp* *fp*

317 *fp* *fp* *fp* *fp* *fp* *fp*

322 *fp* *fp* *ffp* *ff* $\text{♩} = 146$

ffp *ff*

333 **31**

mf *f* *ff*

337 **32** **3**

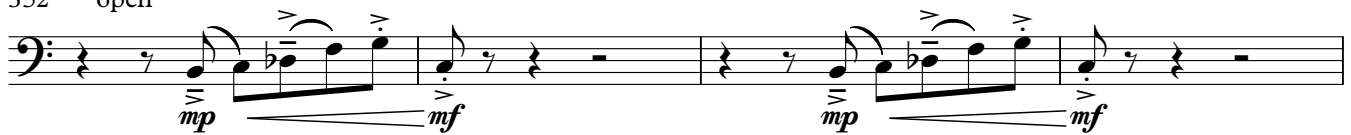
mp *f* *f* *ff*

345 **33** **2** st. Mute

f

349 **34** **2**

352 open



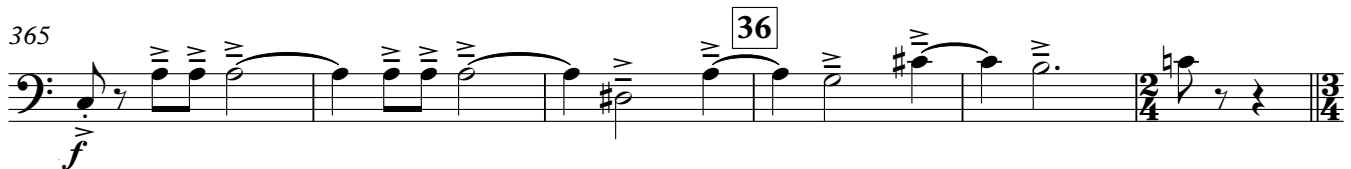
356



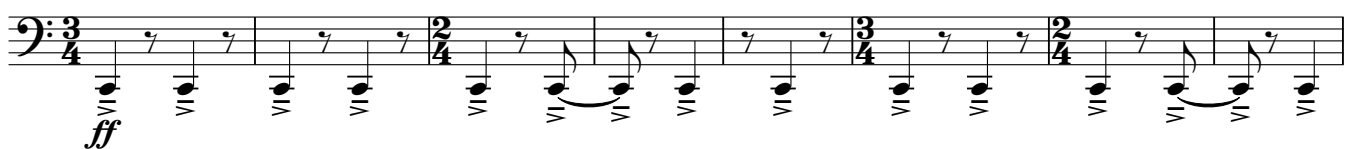
360 35



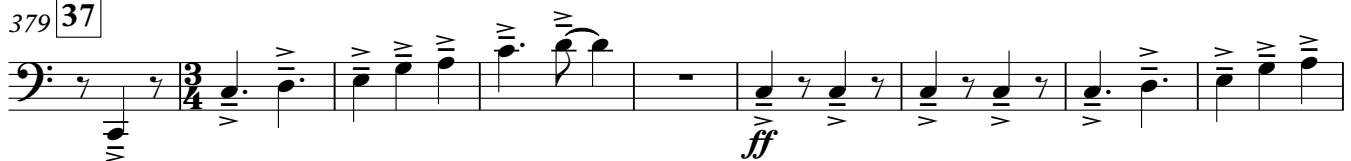
365



371 ♩=152(sub)



379 37



388



395

