

Bb BASS

STEALING APPLES

FATS WALLER
ARR: REID GILTE

$\text{♩} = 96$

8

A

14

20

B

27

C

35

D

39

E

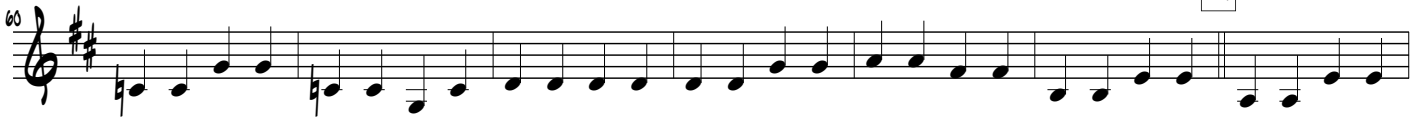
46

F

53

STEALING APPLES - Bb BASS - 2

G



I



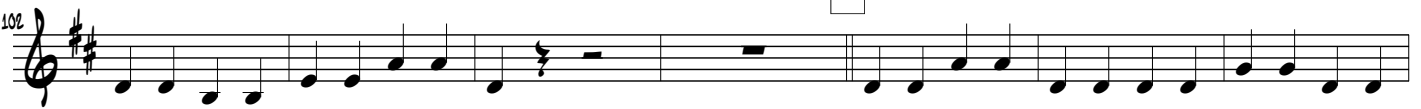
J



K



L



M



N



STEALING APPLES - Bb BASS - 3

0

