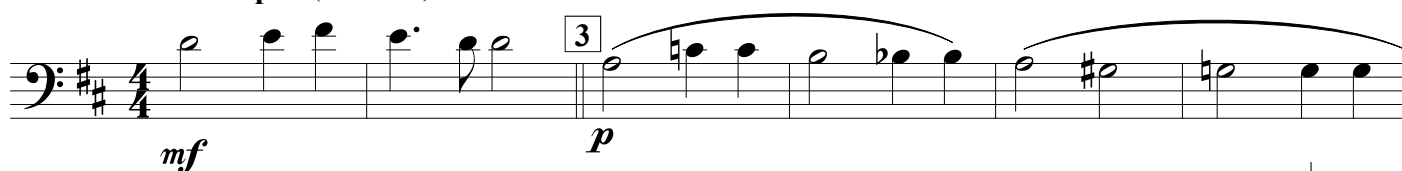
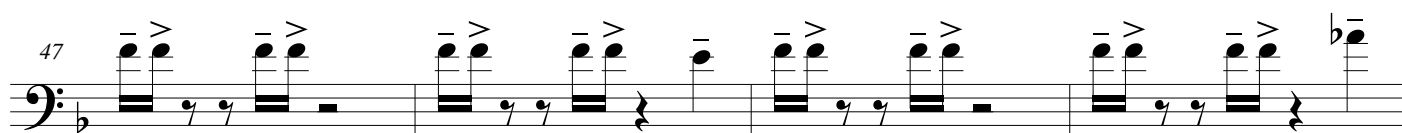
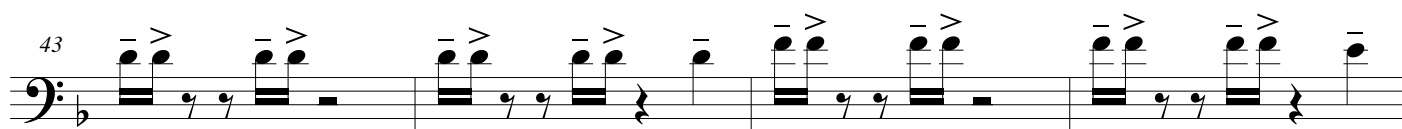
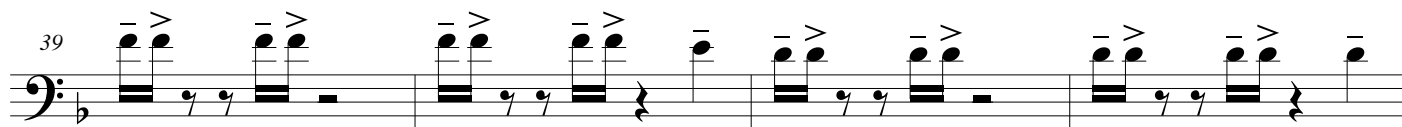
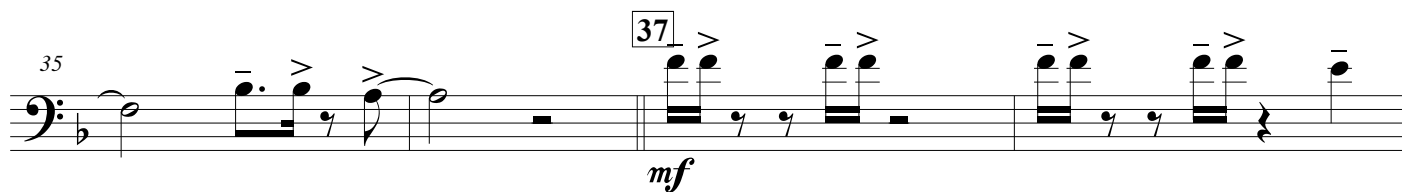
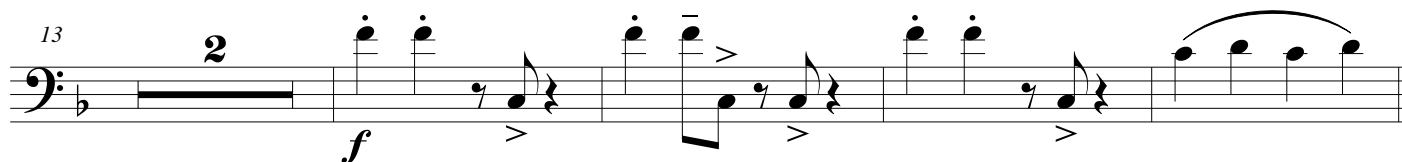


Joyful Joyful

Slow Gospel ($\text{♩} = \text{c. } 76$)Medium Gospel ($\text{♩} = \text{c. } 108$)
Slight Swing on 16th

Joyful Joyful

87

ff

The musical score for the bass line of 'The Rose Tree' is shown. It begins at measure 87 with a double bar line. The key signature is one sharp (F#). The bass line features a series of eighth and sixteenth notes, often beamed together, with various articulations including accents (>) and slurs. The dynamics are marked with *ff* (fortissimo) at the beginning and a hairpin crescendo leading to a final double bar line.