

Bengalsk Lys

Bengal Lights

"Firework for Symphonic Band"

♩ = 96 Rubato

Allegretto

9 10 15 20

21 25 30

35 40 45

mp

♩ = 96 A Tempo

Con Moto Leggiero
 *sempre*

47 *con Moto Leggero*
♩ = ♩ sempre

p (sub) *p*

52

p *p*

55

57

60

5

Tuba 2&3 in E \flat

2

Bengalsk lys

108 110 115 ♩ = 80

118 120 **Animato Piu Mosso**
Leggiero ♩ = 104

125 130

131 *sf* *mp* *sf*

135 140 *fp* <

141 *ff* *sf* *sf* *mp*

145 150

155

153 *mf* *f* *fp* <

Tuba 2&3 in E♭

Bengalsk lys

161 ♩ = 88 Rubato (sensually)

♩ = ♩ Misterioso

rit.
150

mf

164

165

p

170

175

p

4

3

accel.

180

♩ = 96

185

3

2

188

190

p

195

200

205

210

215

216

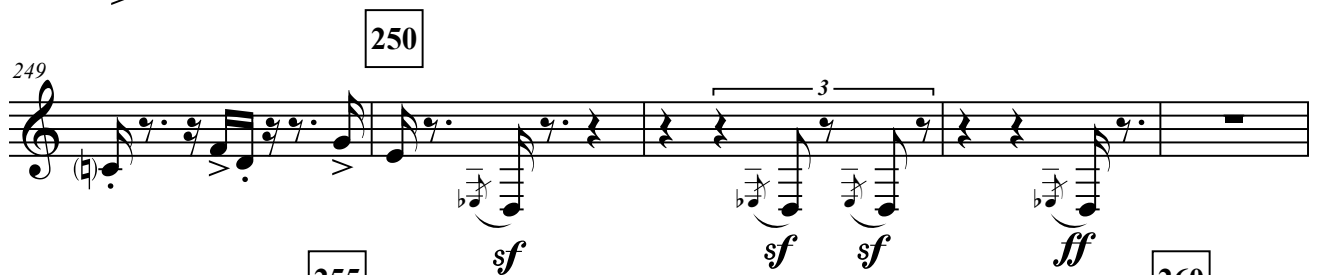
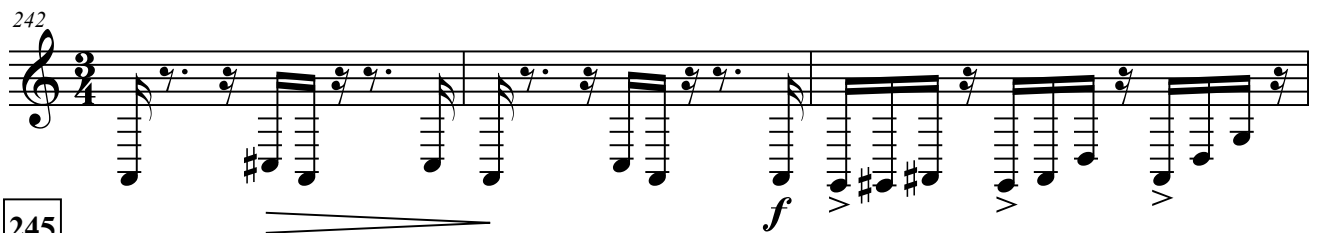
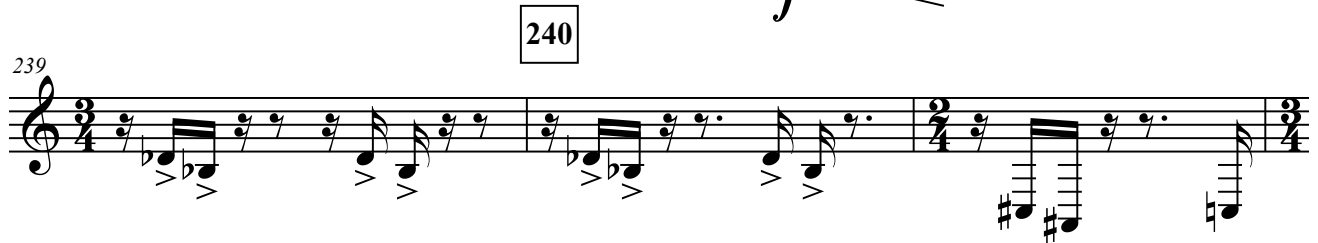
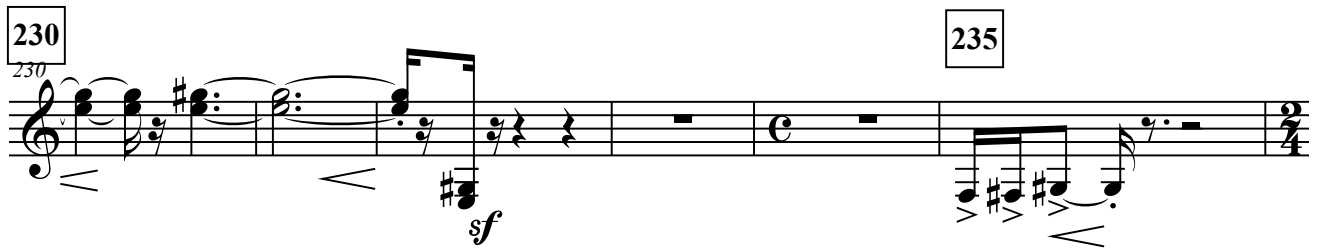
220

p

mp

Tuba 2&3 in Eb

225 Bengalsk lys



Tuba 2&3 in Eb

Bengalsk lys

accel. sempre

265

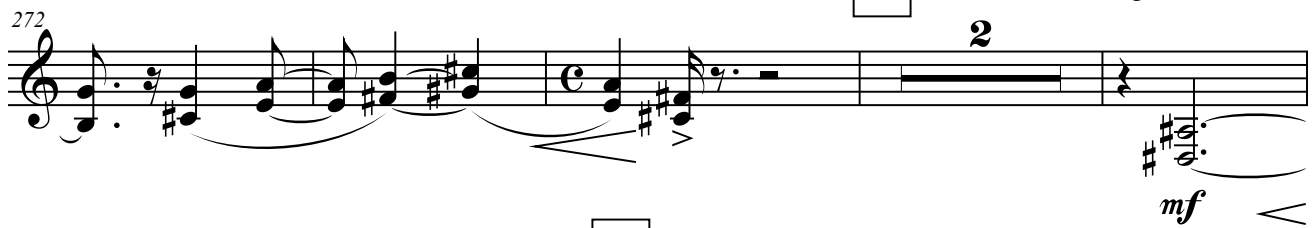


270



275

♩ = 108



280

accel.



♩ = 126

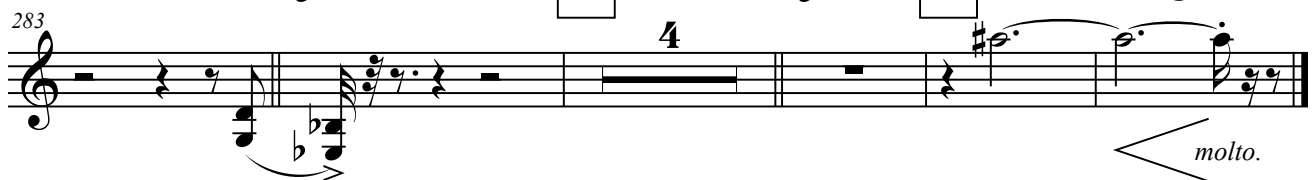
accel.

285

♩ = 138

290

Allargando



Tuba 2&3 in E♭