

for Kristiansand Blåseensemble
SKETCHES OF PAIN**6**

Øyvind Moe

Steady, mechanically (♩=115)**11****Flowing** (♩=70)**10****Bickering** (♩=94)

5

71 Groovy ($\text{♩}=126$)

75



79 With determined drive



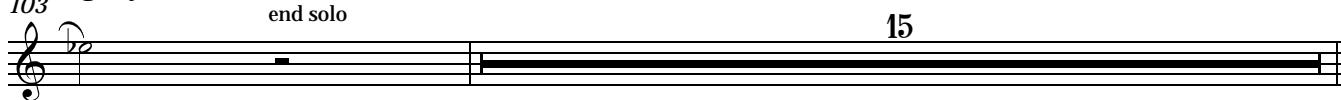
12

87 Slow ($\text{♩}=67$)
Solo

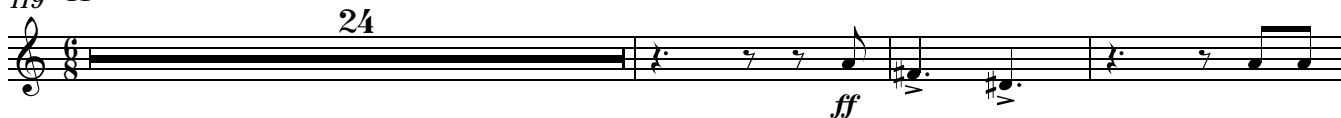
96



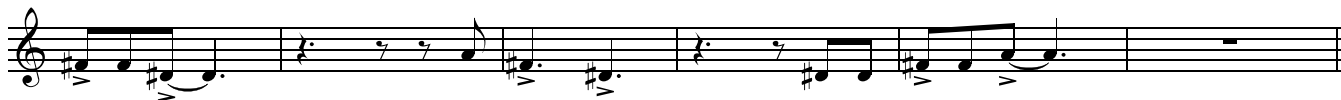
13

103 Slightly slower ($\text{♩}=60$)
end solo

7

119 Aggressive! ($\text{♩}=100$)

146



8

152 Moderate, like a slow waltz ($\text{♩}=97$)

9

163 In strict time, not too slow ($\text{♩}=84$)

171

