

The Green Suite

1. Introduction

Øystein Sjøvaag Heimdal

Allegro $\text{♩} = 120$

Measures 1-63 of the Introduction. The score is in 4/4 time. It begins with a piano (*p*) dynamic. Measures 1-8 are marked with a box containing the number 13. Measures 9-16 are marked with a box containing the number 17. Measures 17-24 are marked with a box containing the number 8. Measures 25-32 are marked with a box containing the number 25. Measures 33-40 are marked with a box containing the number 33. Measures 41-48 are marked with a box containing the number 41. Measures 49-56 are marked with a box containing the number 49. Measures 57-64 are marked with a box containing the number 57. Measures 65-72 are marked with a box containing the number 61. Measures 73-80 are marked with a box containing the number 63. The dynamics range from *p* to *ff*.

2. A Sad Tune

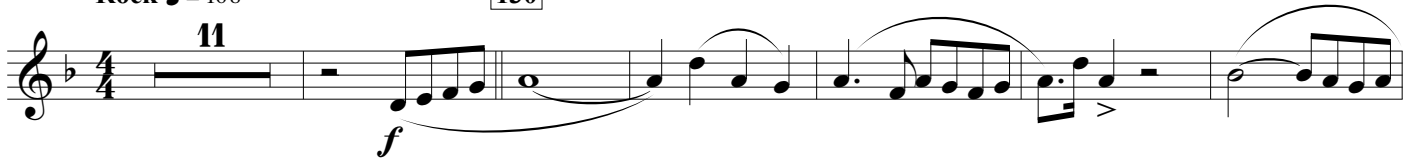
Andante $\text{♩} = 72$

Measures 73-113 of the A Sad Tune. The score is in 4/4 time. It begins with a mezzo-piano (*mp*) dynamic. Measures 73-80 are marked with a box containing the number 73. Measures 81-88 are marked with a box containing the number 85. Measures 89-96 are marked with a box containing the number 97. Measures 97-104 are marked with a box containing the number 105. Measures 105-112 are marked with a box containing the number 113. Measures 113-120 are marked with a box containing the number 5. The dynamics range from *p* to *f*.

3. Rock

Rock ♩ = 108

130



142

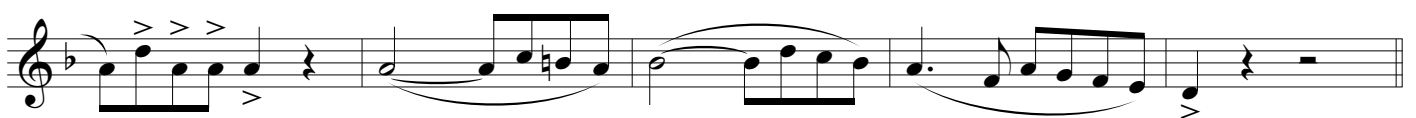
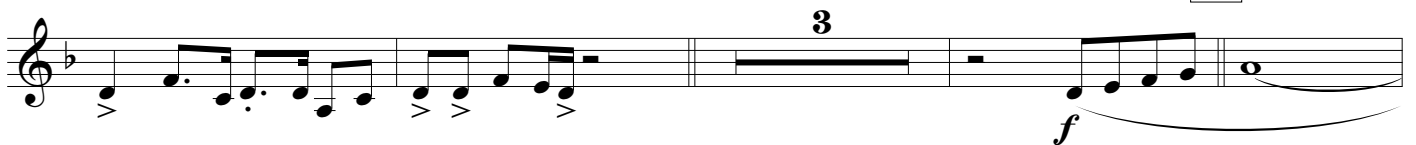


154



166 Optional drum solo

170 On cue



4. Chorale and Finale

Andante ♩ = 80

190

8

mf

f

accel.

200 Allegro

204

216

8

228

mp

mf

240

f

252

ff

264 Maestoso

rit.

ff