

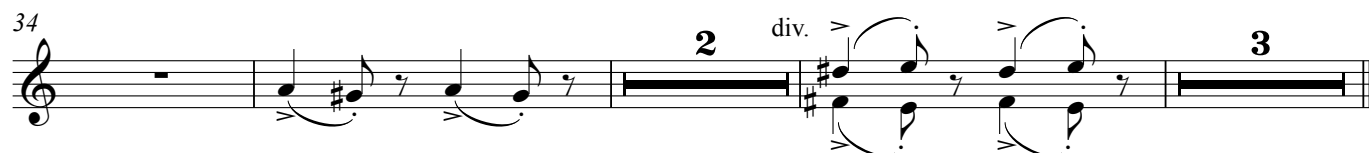
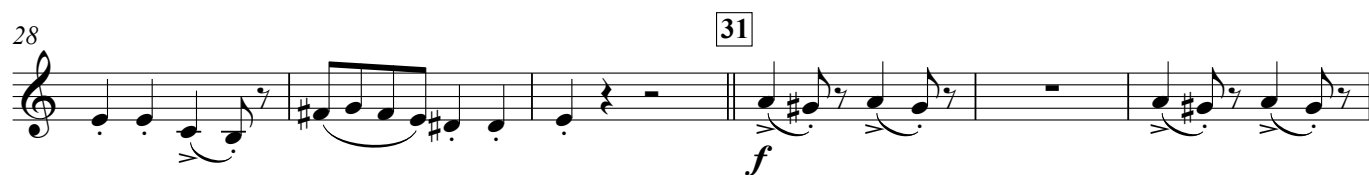
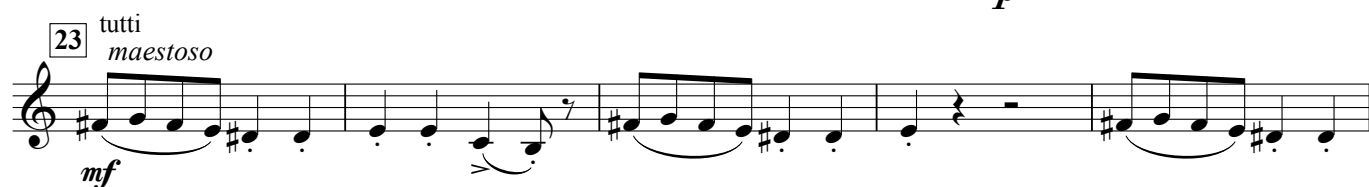
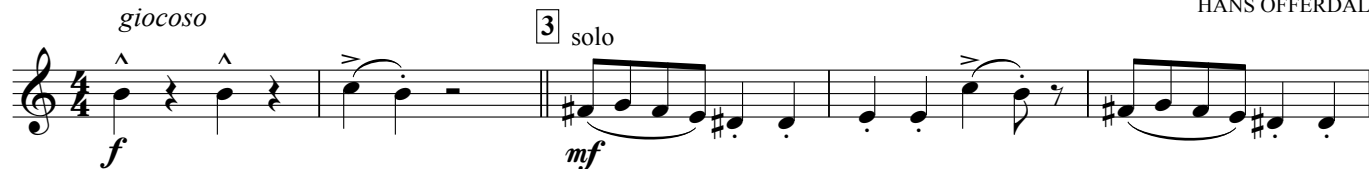
## Three Sides of a Triangle

'A'

♩ = 112 - 120

*giocoso*

HANS OFFERDAL



# Three Sides of a Triangle

Horn in E♭

50 ♩ = 144 *ff* *accel.* *p*

54 ♩ = 160 *f* *div.* *ff*

'B'

♩ = 132 *delicato* *mf* *mf* *p* *mf*

15 *delicato* *p* *mp*

22 *mf*

28 *2* *35* *4*

39 *pesante* *div.* *f* *43* *unis* *festivo*

46 *pp*

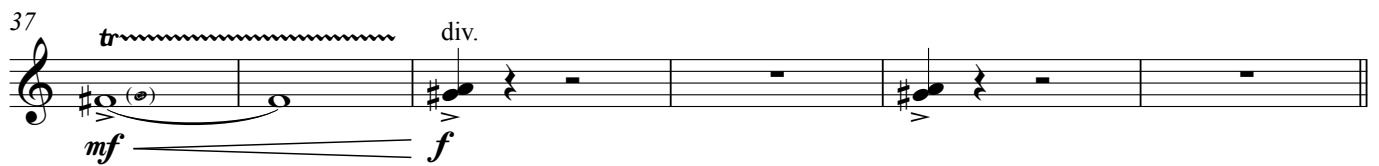
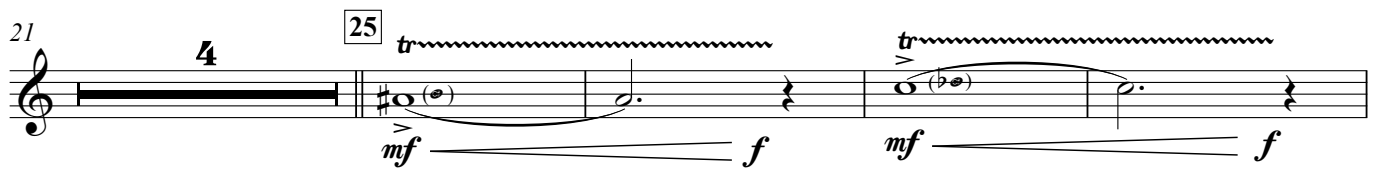
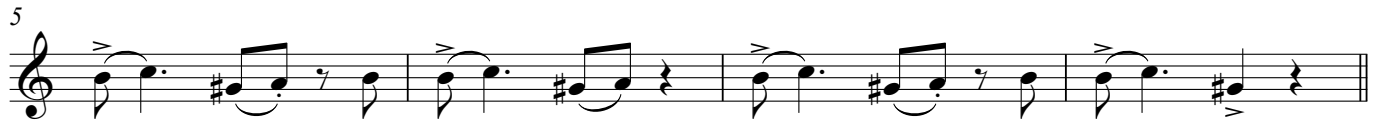
# Three Sides of a Triangle

Horn in E $\flat$

'C'

$\text{♩} = 160$

*molto energico*



Three Sides of a Triangle

Horn in E $\flat$

