

FIRE THE ROYALWORKS!

Et fyrverkeriverk

Tuba Eb BC

Olav Berg (2011)

♩ = 56



6



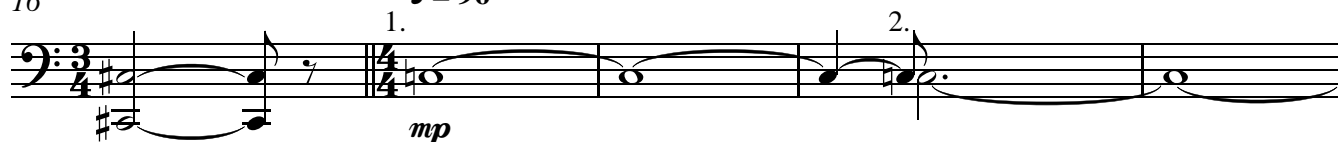
11

♩ = 66



16

♩ = 96



21

accel.



27 ♩ = 116

8

1.

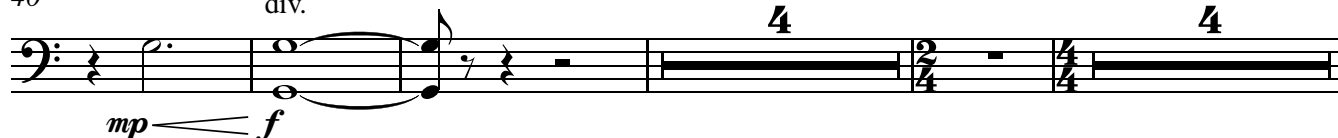


40

div.

4

4



52 *a2*
mp *< f* *mf*

57

63 *♩* = 56 *♩* = 76 *♩* = 56
ff

68

73 *L'istesso tempo* *13* *♩* = 72 *1.* *2.* *accel.*
p

90 *♩* = 116 - 120
f *p* *f* *p*

94
f *mp* *f* *mp*

97 *poco accel.* *♩* = ca. 126
mp *f*

102 *8vb*
ff

107 **Meno mosso** ♩ = 56 $\frac{56}{4}$ 1. 2.

(8)--- loco *p*

117

125 **Poco piu mosso** ♩ = ca. 66 2. 7. 1.

pp

138 2. ♩ = 116 3. 2.

149 3. 5. 1.

mp

161 2.

165 **accel.** a2 *f*

170 ♩ = 126 *ff*

174 ♩ = 56

175 1. 2.

p

181

f

187 ♩ = 69

8 3

199

f a2

205 Pesante Poco meno

1. 2. *ff* 8^{vb} loco

210 poco rit. a2 Mosso ♩ = 72

ff 8^{vb}